



Building Vibrancy:

Creative Placemaking

& Gateway City Green Spaces

MassINC

Massachusetts Land Conservation Conference

Worcester

March 23, 2013

Gateway Cities matter

- Gateways to the middle class for generations of families climbing the economic ladder
- Gateways to educational, cultural, and other major institutions
- Gateways to economic activity in their metro areas as well as the larger Northeast region

Gateway Cities are a clear and compelling economic opportunity



markets



housing

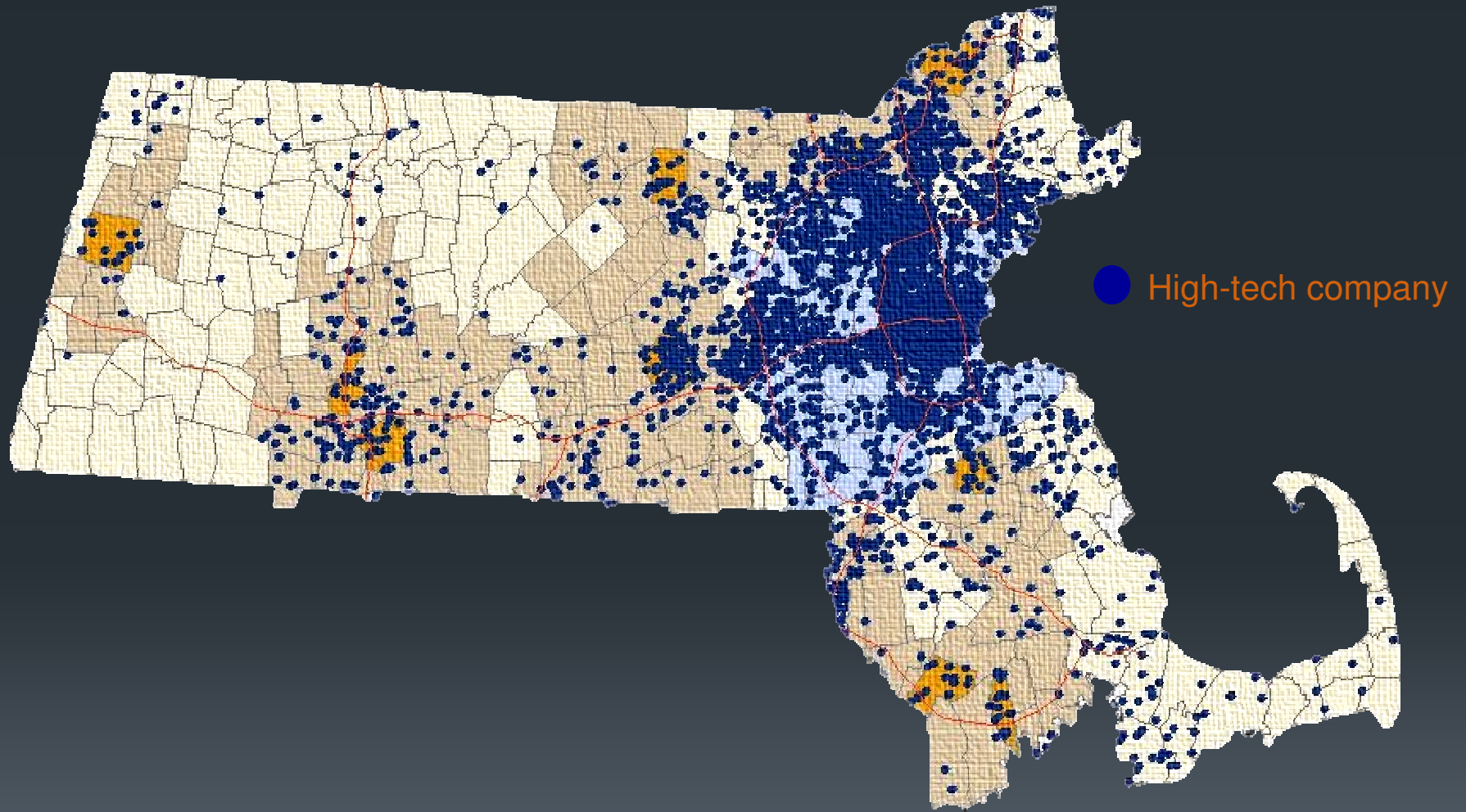


people



infrastructure

Tech economy is concentrating growth



Building a Gateway Cities movement

2007

MassINC-Brookings report shows knowledge economy leading to uneven growth

2008

Gateway City mayors sign compact; Legislature forms caucus

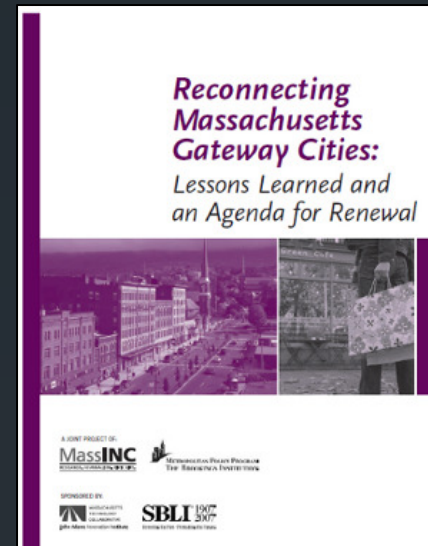
2010

Governor signs first Gateway Cities Bill

Boston Globe writes 5-part editorial series; other organizations announce Gateway City initiatives

2012

MassINC launches Gateway Cities Innovation Institute



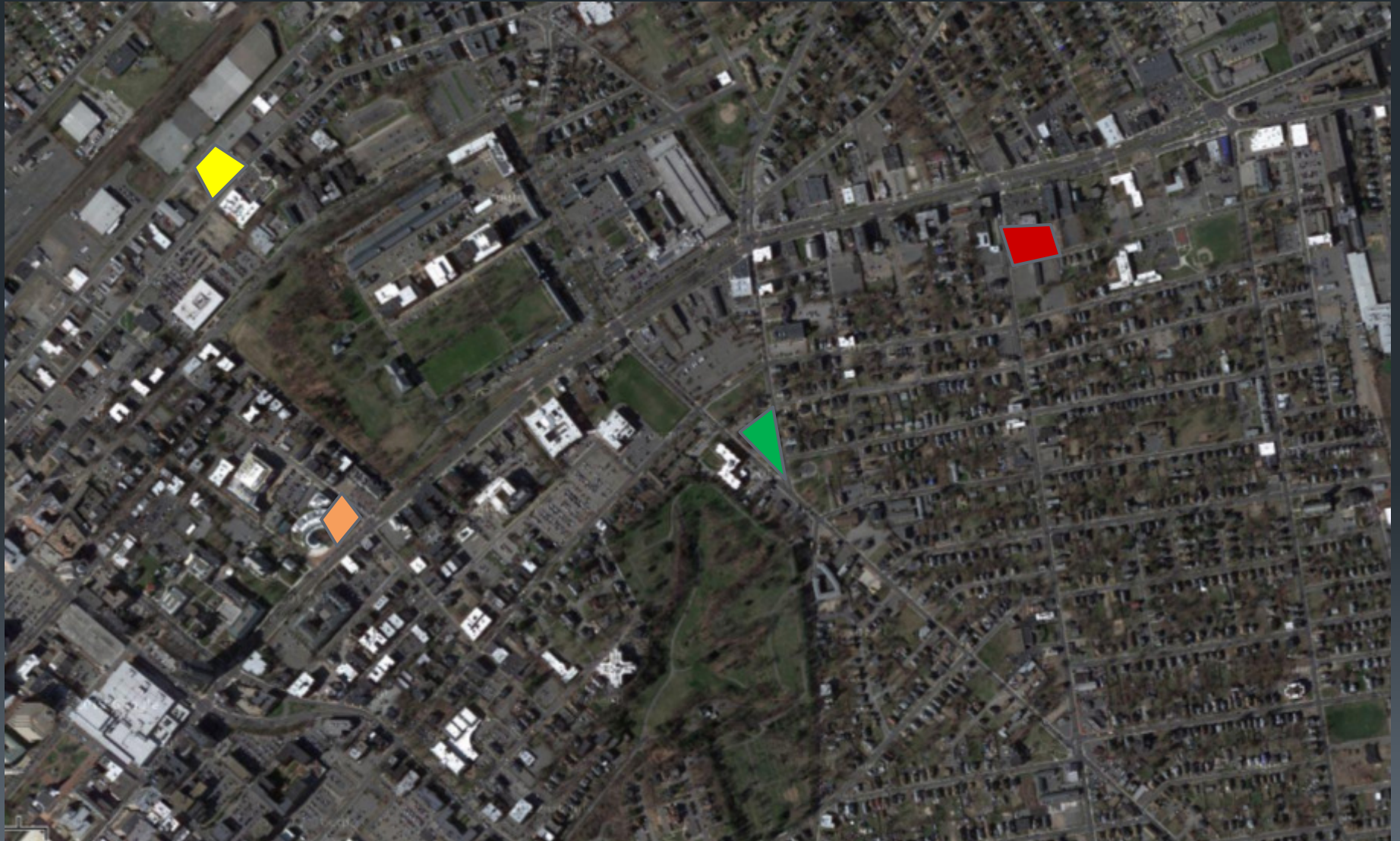
EDUCATION

TRANSPORTATION

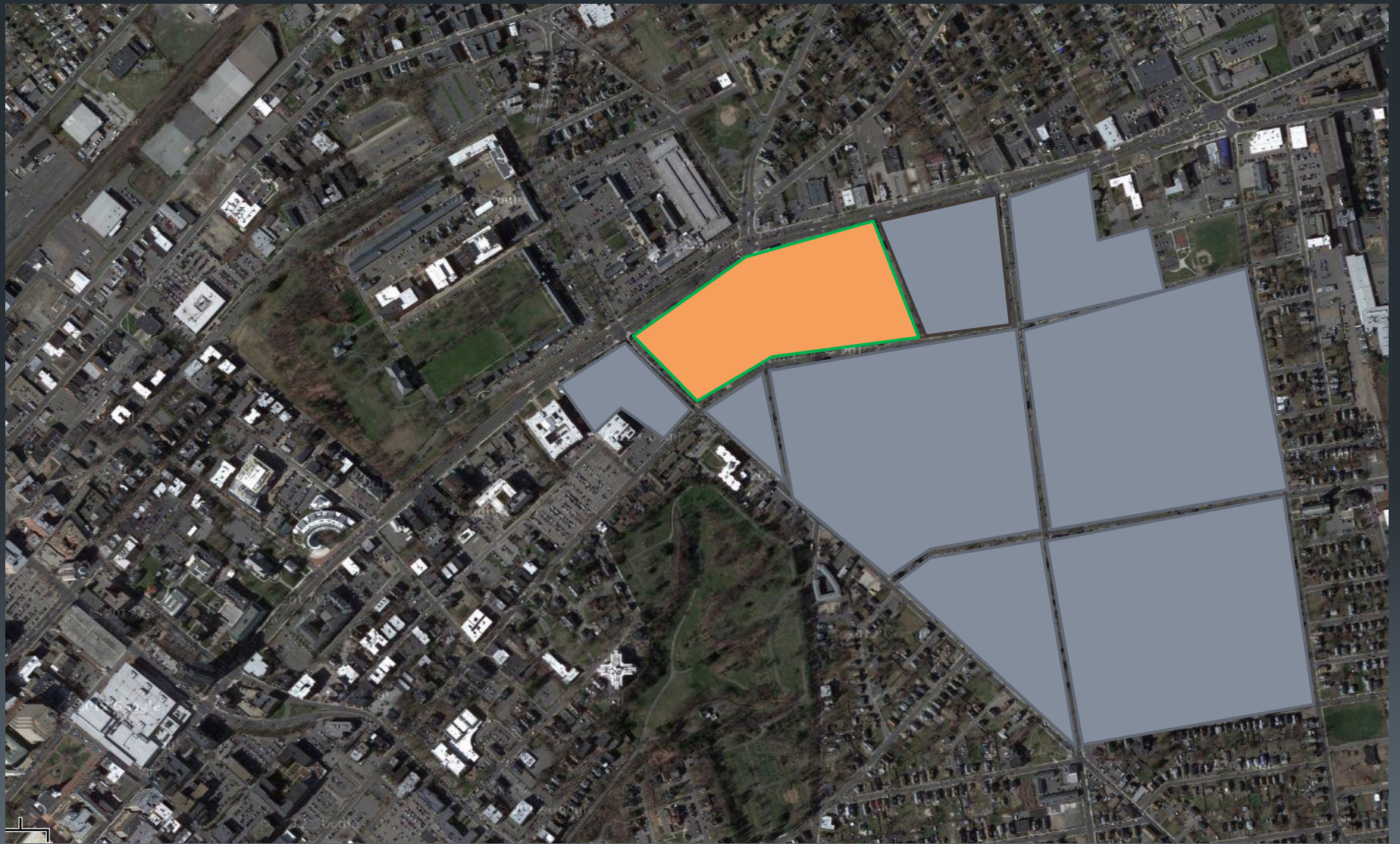
Gateway Cities
Innovation
Institute

TRANSFORMATIVE
REDEVELOPMENT

TRANSFORMATIVE REDEVELOPMENT



TRANSFORMATIVE REDEVELOPMENT





5

Cultural Downtown

The hub of Hartford's cultural activity (major venues in white) is Downtown, an historic and unusually compact urban district; but its exceptional potential as a cultural district has yet to be fully realized.

