

Social Infrastructure:
*Towards More Walkable, Resilient
& Inclusive Gateway Cities*

November 15, 2022

A report by André Leroux, Sidney Kuesters & Ben Forman

MassINC

Pandemic Questions

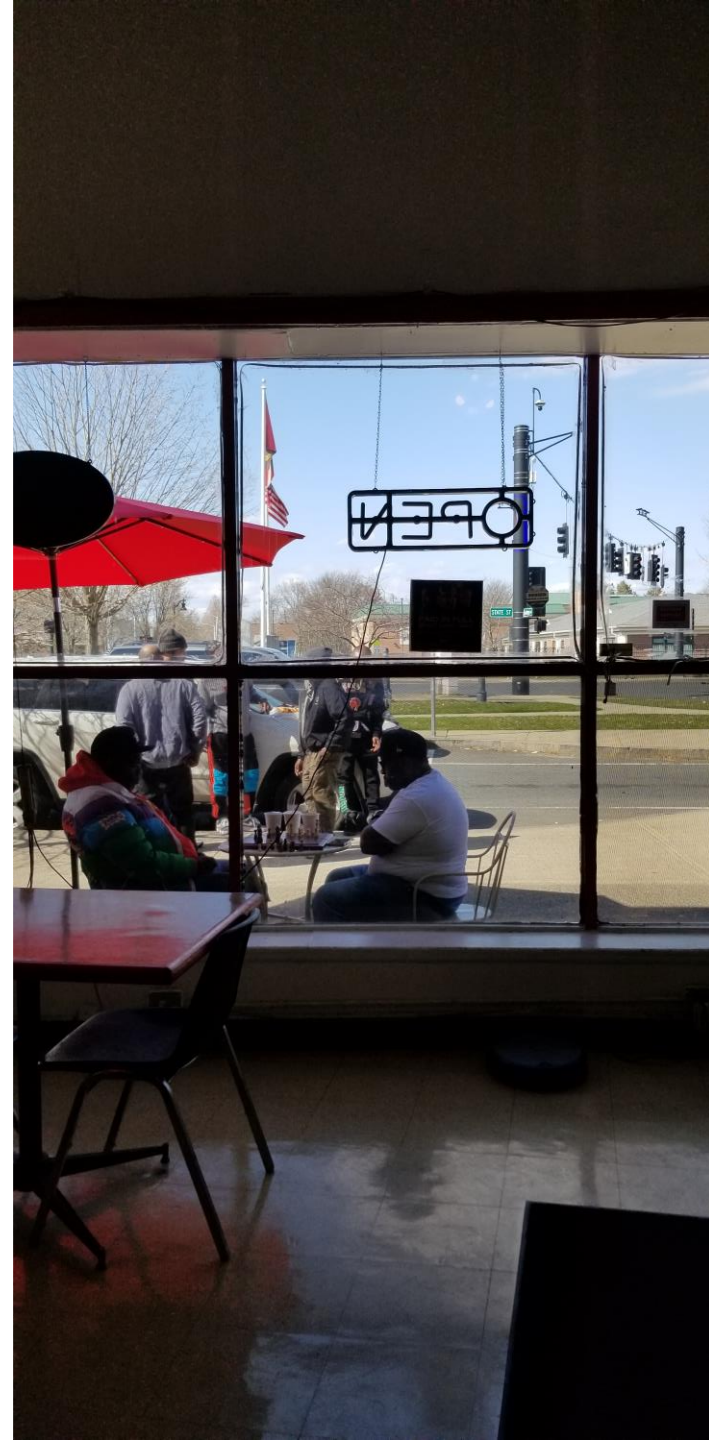
- Many Gateway Cities suffered disproportionately from the pandemic. Civic and open space became more important than ever. What is the quality of these spaces and do residents have adequate access?
- Do essential workers who live in Gateway Cities enjoy adequate transportation choices? Can you thrive without a car?
- Would a hybrid work force relocate to Gateway Cities?
- Can small downtowns flourish during and after the pandemic? Are they adequately serving their diverse communities and helping to build local jobs and prosperity?
- Why don't regional downtowns feel as vibrant as they should?



Isolation & Public Health

- Social isolation significantly increased a person's risk of premature death from all causes, a risk that may rival those of smoking, obesity, and physical inactivity.
- Social isolation was associated with about a 50% percent increased risk of dementia, 32% increased risk of stroke, 29% increased risk of heart disease, and higher rates of depression, anxiety, and suicide.
- Immigrant and LGBTQ+ populations at higher risk.

National Academies of Sciences, Engineering and Medicine, 2020





Social Infrastructure

From cafes and barbershops to libraries, parks, and public transit, urban neighborhoods house a diverse collection of spaces that promote social interaction.

Social infrastructure refers to the ways in which the built environment shapes meaningful community life.

Examples of Social Infrastructure



Social Infrastructure

Social infrastructure is not “social capital”—a concept commonly used to measure people’s relationships and interpersonal networks—but the physical conditions that determine whether social capital develops.

- Eric Klinenberg, *Palaces for the People*

Strong places are the foundation of prosperous, equitable, and resilient cities and regions.

- Jennifer Vey & Nate Storrington, *Hyperlocal*

Project Partners



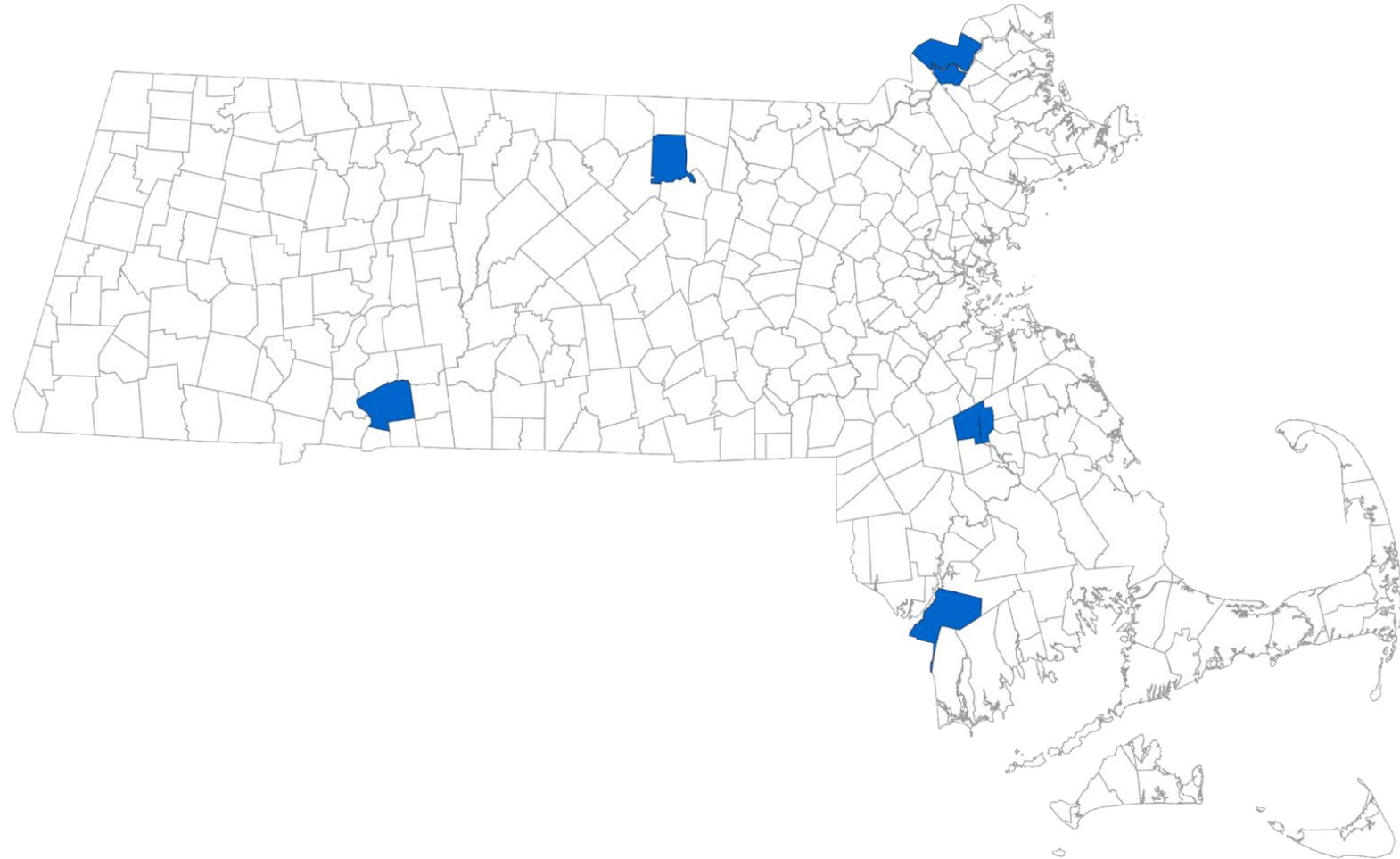
**Barr
Foundation**



THE LAWRENCE & LILLIAN
SOLOMON FOUNDATION

Five Downtown Case Studies

- Springfield
- Fitchburg
- Brockton
- Haverhill
- Fall River



Why don't more people walk in Gateway City downtowns?



Main Street, Brockton

Walkability - Infrastructure



ROADWAYS



CROSSINGS



SIDEWALKS



STREETSCAPE
ELEMENTS

Haverhill



Fall River



Why don't more people walk?



Parking Analysis

SPRINGFIELD, MASS. Main Street.

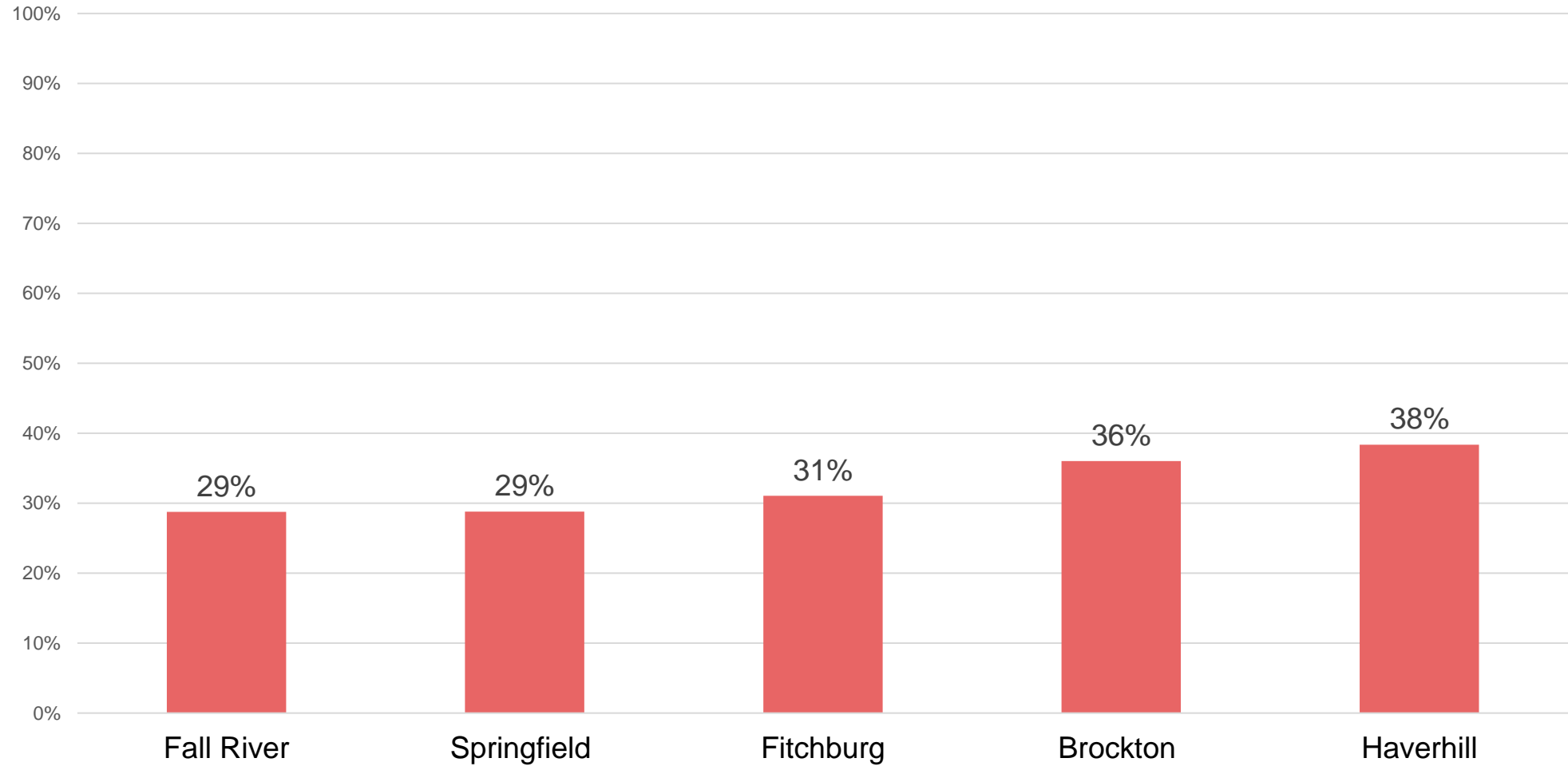
Took in the sights on this

about



Brockton City Hall and parking lot

Parking as a Percentage of Developable Land

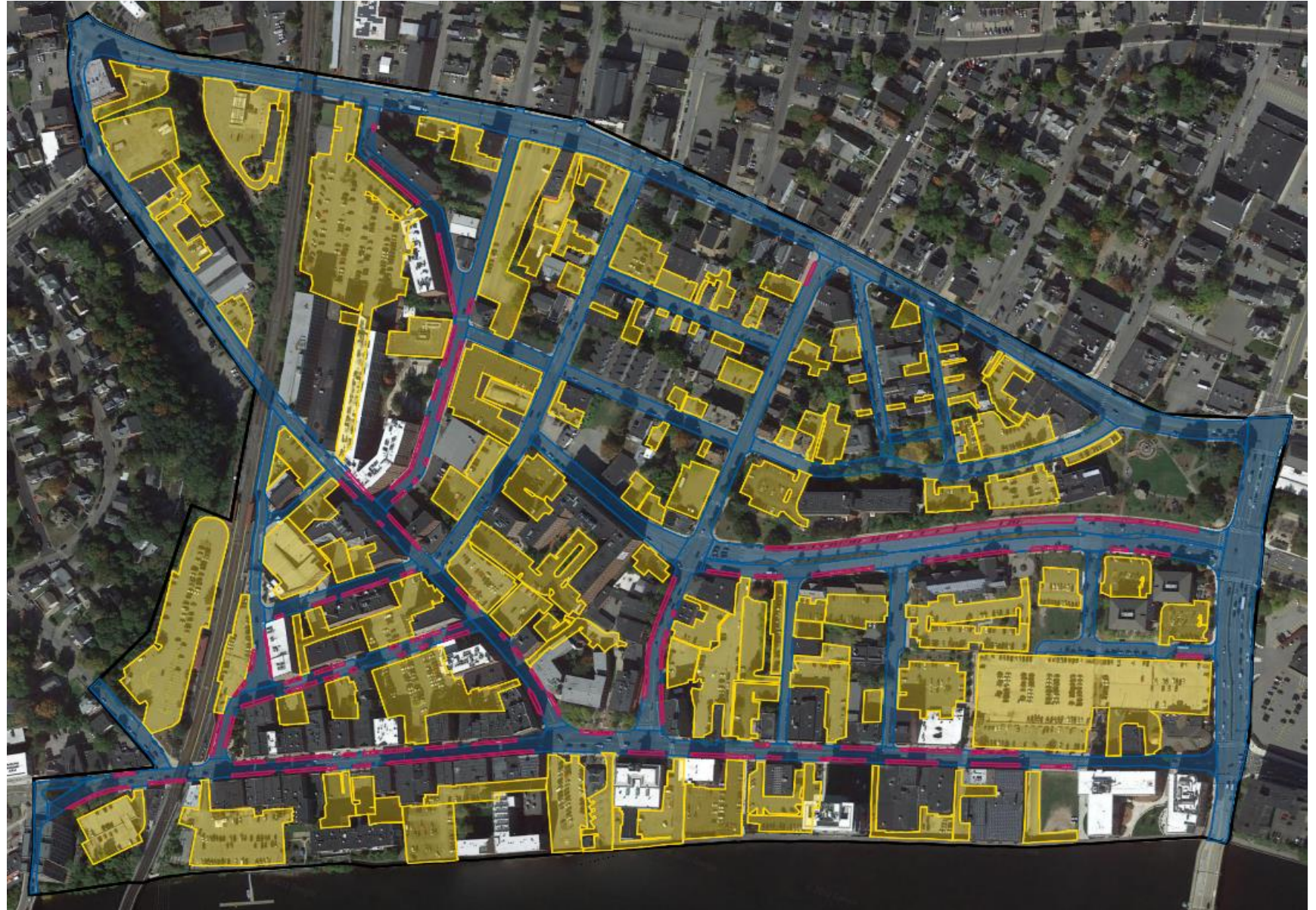




Haverhill

Total Land Dedicated to Car Infrastructure

Car-Oriented Infrastructure makes up 48% of Haverhill's Downtown Area





Streetscape Analysis

PREFERRED
STAFFING

MARVELOUS
CUTS



Active vs. Inactive Streetscapes

Haverhill

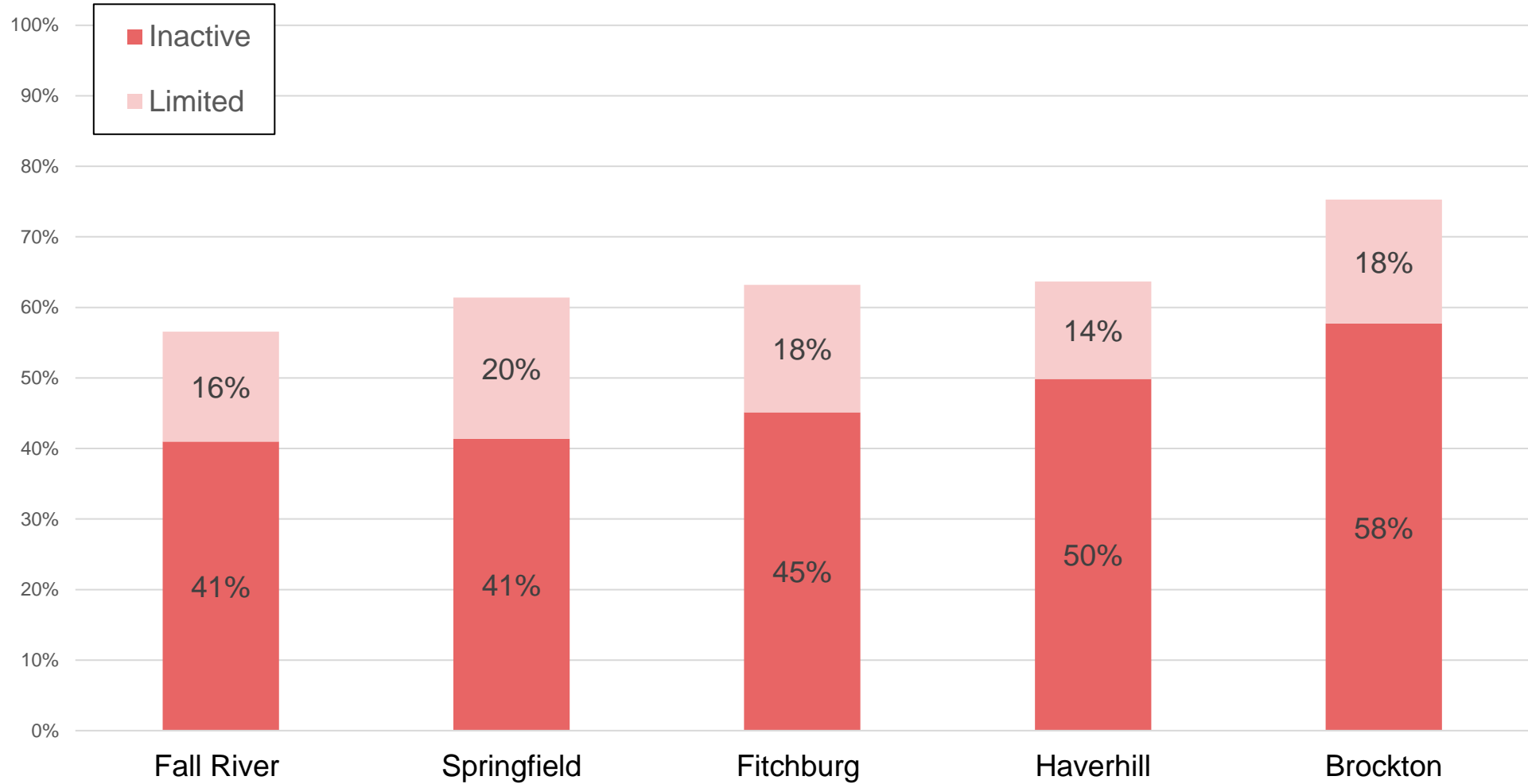


Streetscapes



Fall River

Limited and Inactive Frontage as a Share of Total Streetscape

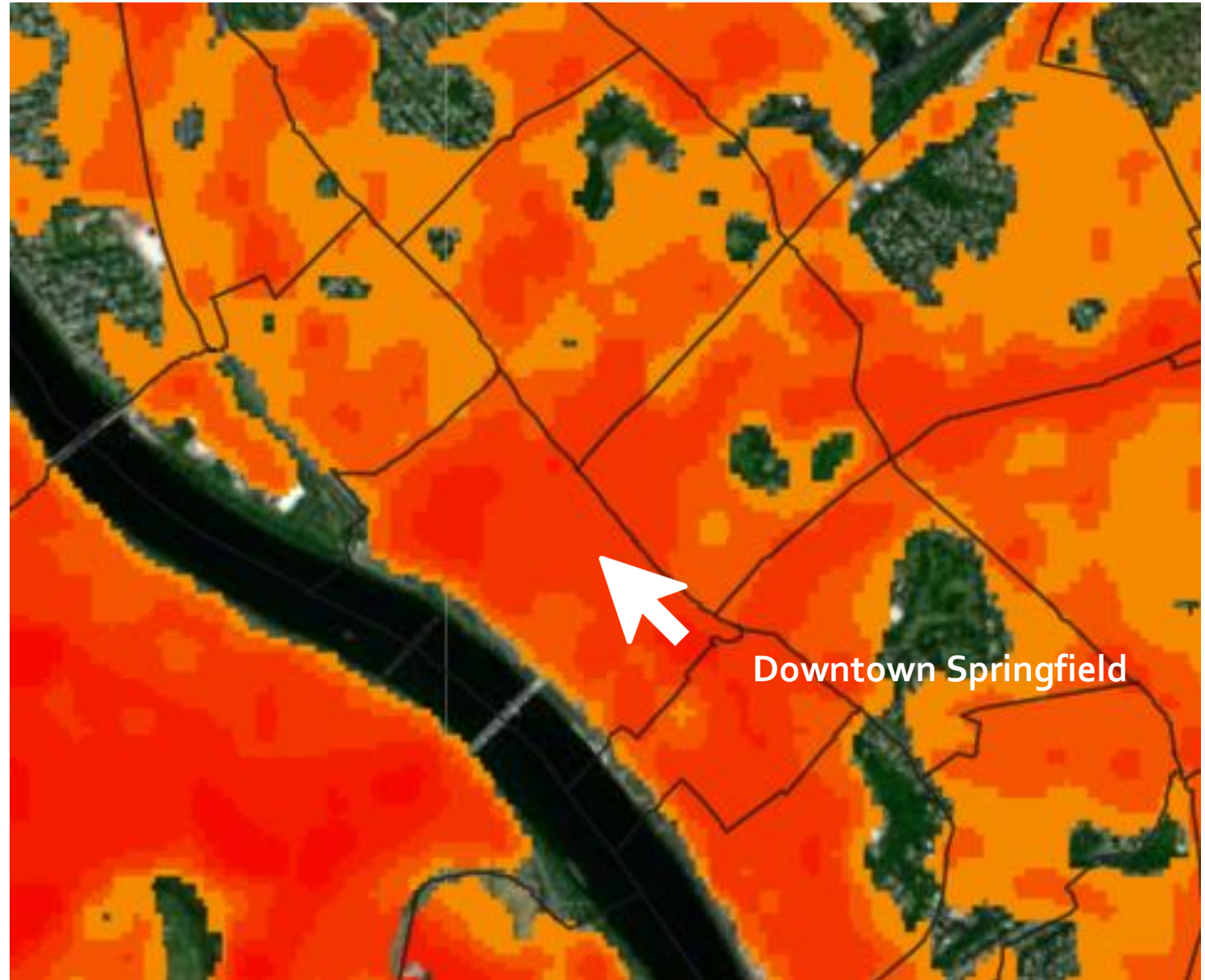


Urban Heat Island

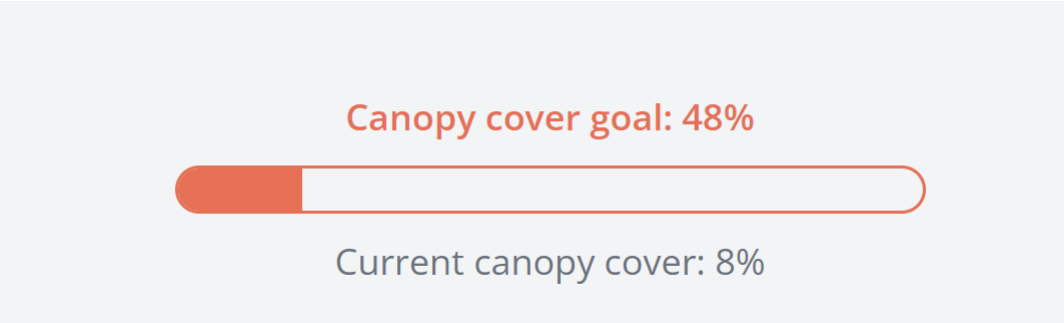
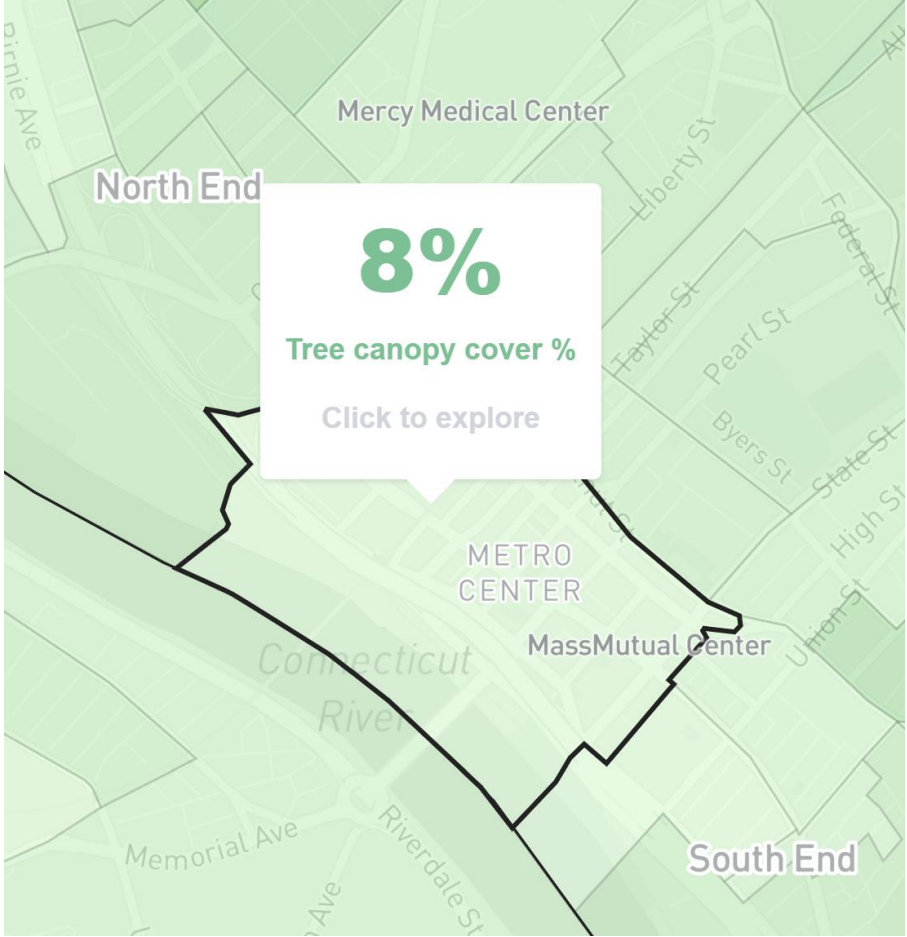
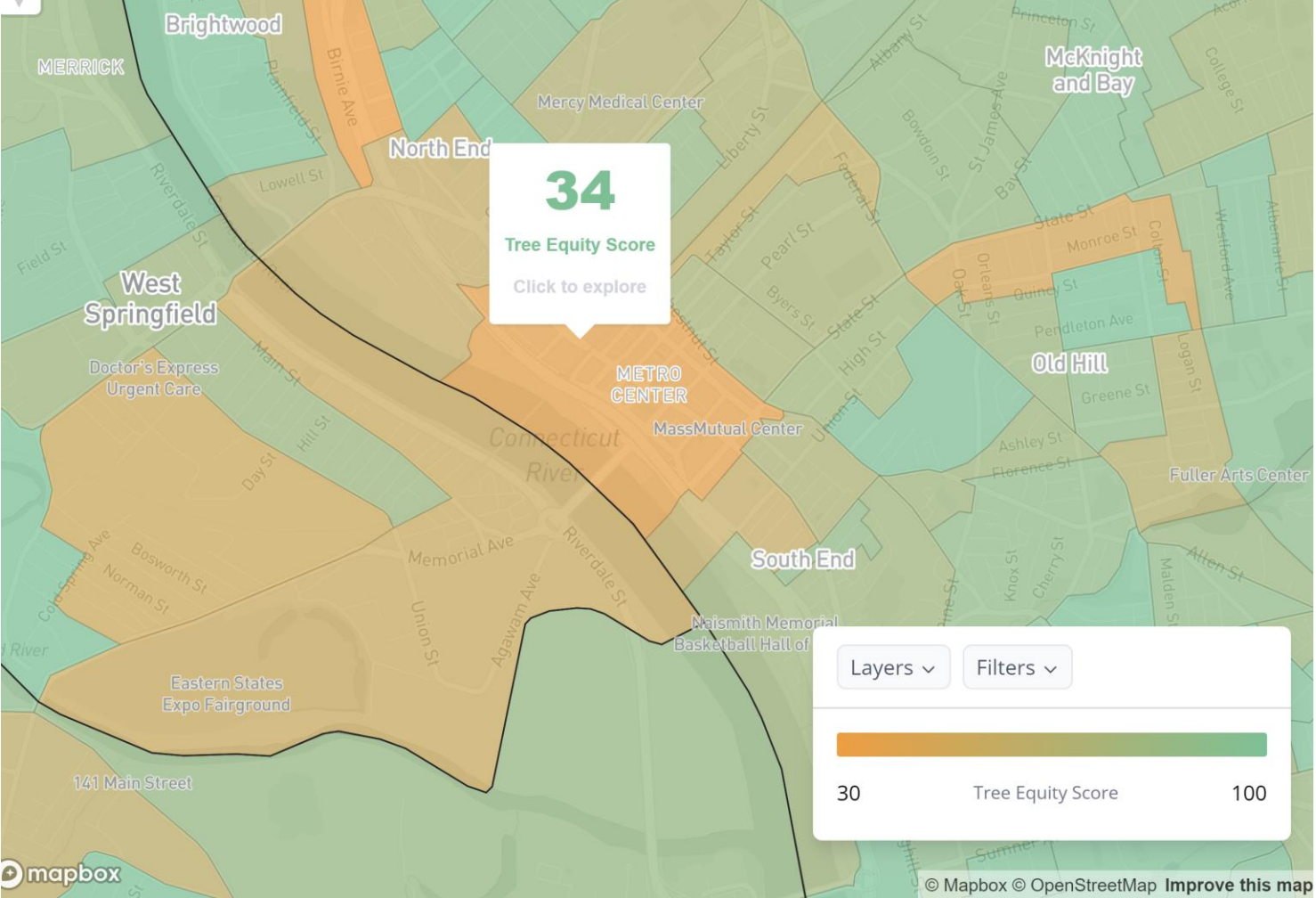
What is the Urban Heat Island Effect?

"Urban heat islands occur when cities replace natural land cover with dense concentrations of pavement, buildings, and other surfaces that absorb and retain heat. This effect increases energy costs (e.g., for air conditioning), air pollution levels, and heat-related illness and mortality." - EPA

The Trust for Public Land,
Descartes Labs, USGS



Tree Cover: Springfield



Regional Mobility



Brockton Commuter Rail Station and Police Station

Civic Spaces

Monument Park

Heart of
downtown
Fitchburg

35,458 ft²





Fitchburg District Court

Fitchburg Police Department

Dario's Ristorante
Italian • \$\$

Monument Park

Christ Church

It's Finally Hair

Community Legal Aid

Royal Fuel
Gas shop

Espresso Pizza

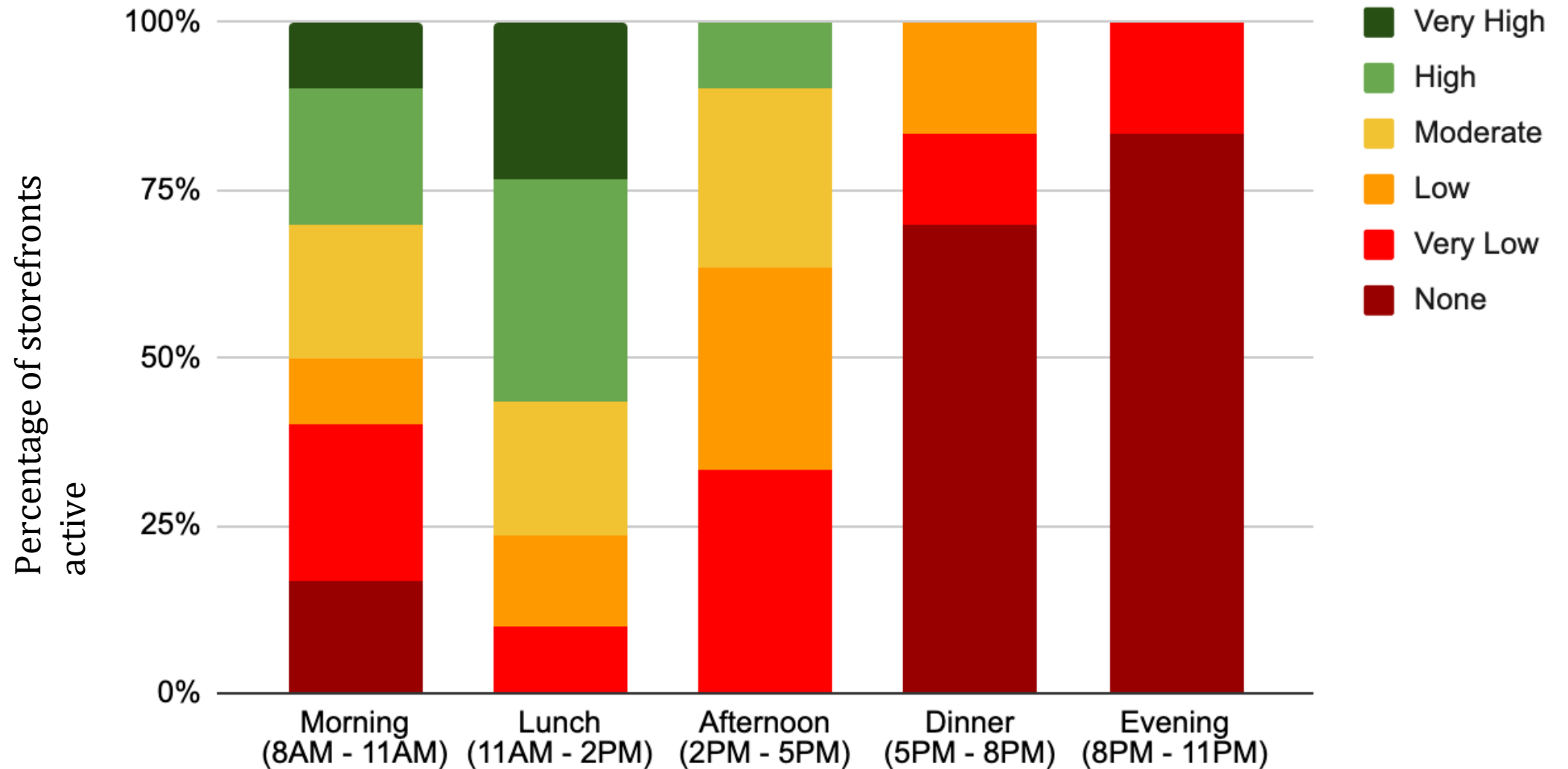
Kingston Island
Jamaican

Putnam St Garage

Google

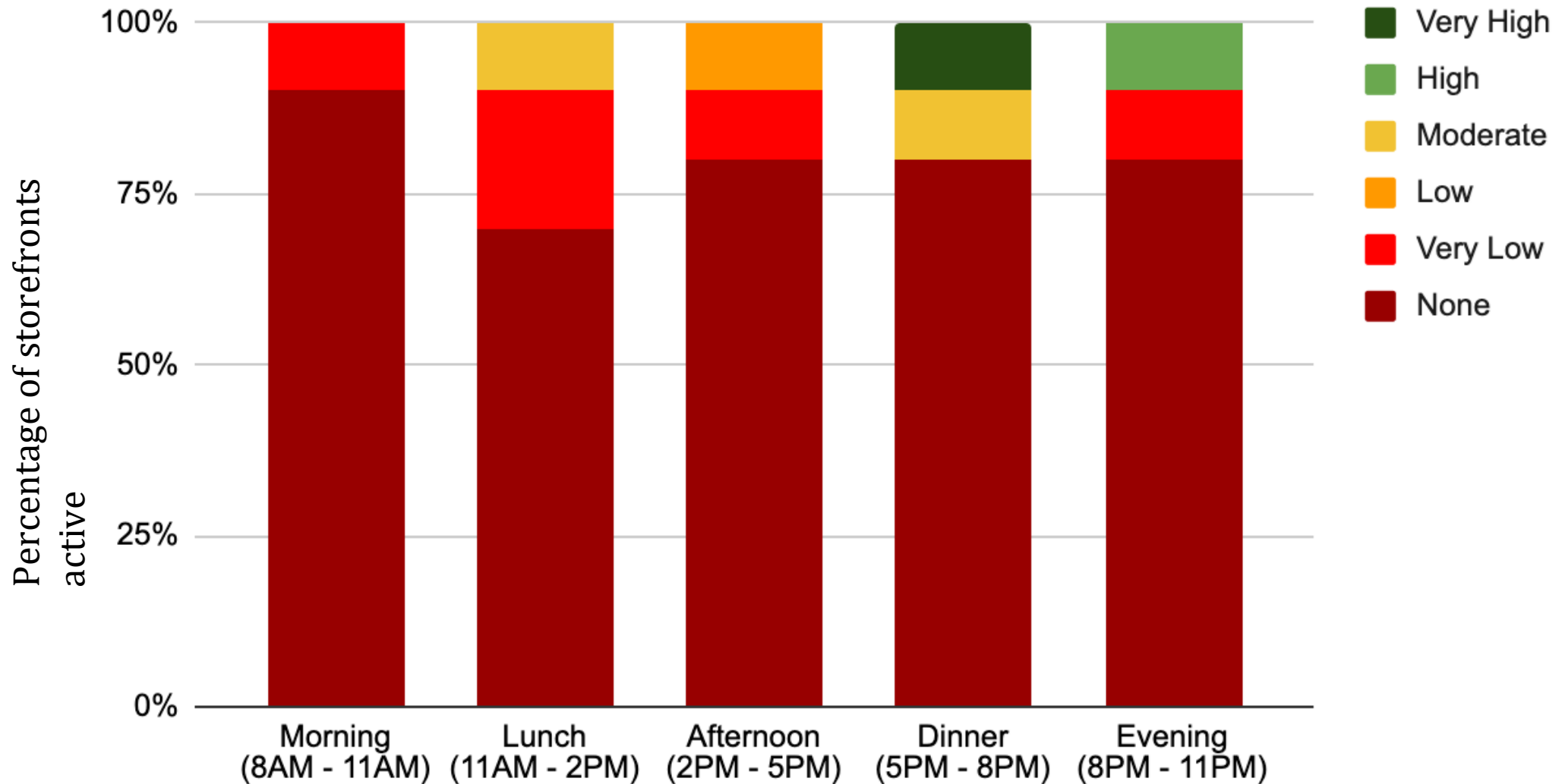
Pedestrian Activity Level (PAL) - Monument Park

Weekday PAL per Category at Monument Park



Pedestrian Activity Level (PAL) - Monument Park

Weekend PAL per Category at Monument Park



Active & Inclusive Civic Spaces



Zocalo, Coyoacan, Mexico City (Photo: Viator, TripAdvisor)

Inclusive Entrepreneurship & Third Spaces

Legion Parkway Brockton

- 2 Blocks
- 23 Active Entrances
- 9 Empty Storefronts
- 4 rows of parking
- 63,308 ft²



Y. M. AND Y. W. H. A., COMMUNITY CENTER

60217

OFFICE FILE



LEGION PARKWAY, BROCKTON, MASS.

60217

<https://www.digitalcommonwealth.org/search/commonwealth:ok225s89p>



Google



Street View

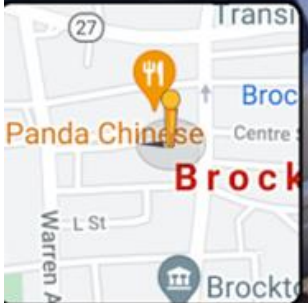
DIVA FASHION
LADY'S WEAR AND ACCESSORIES



Legion Plwy

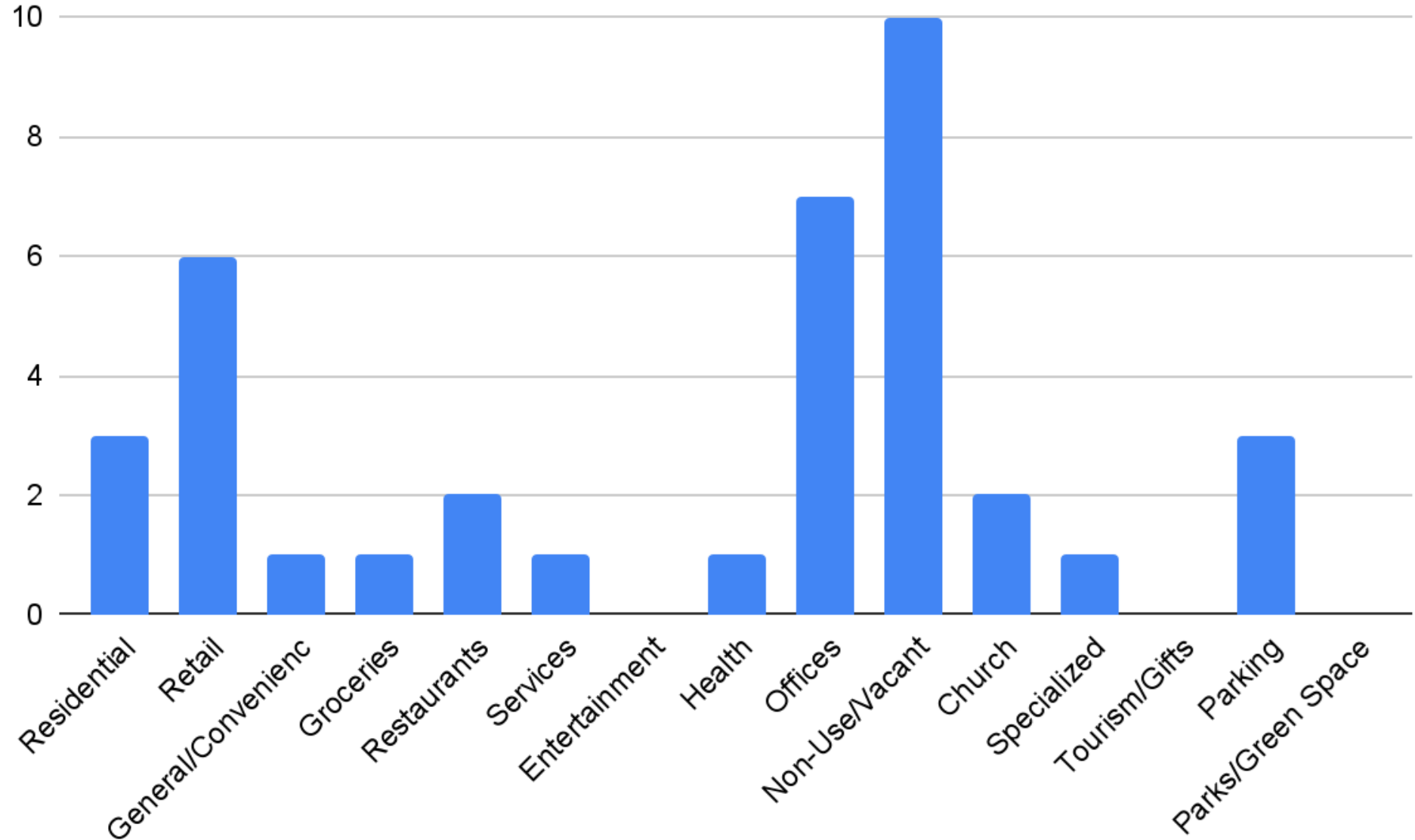


FOUR SEASONS PLUS
LAND SERVICES



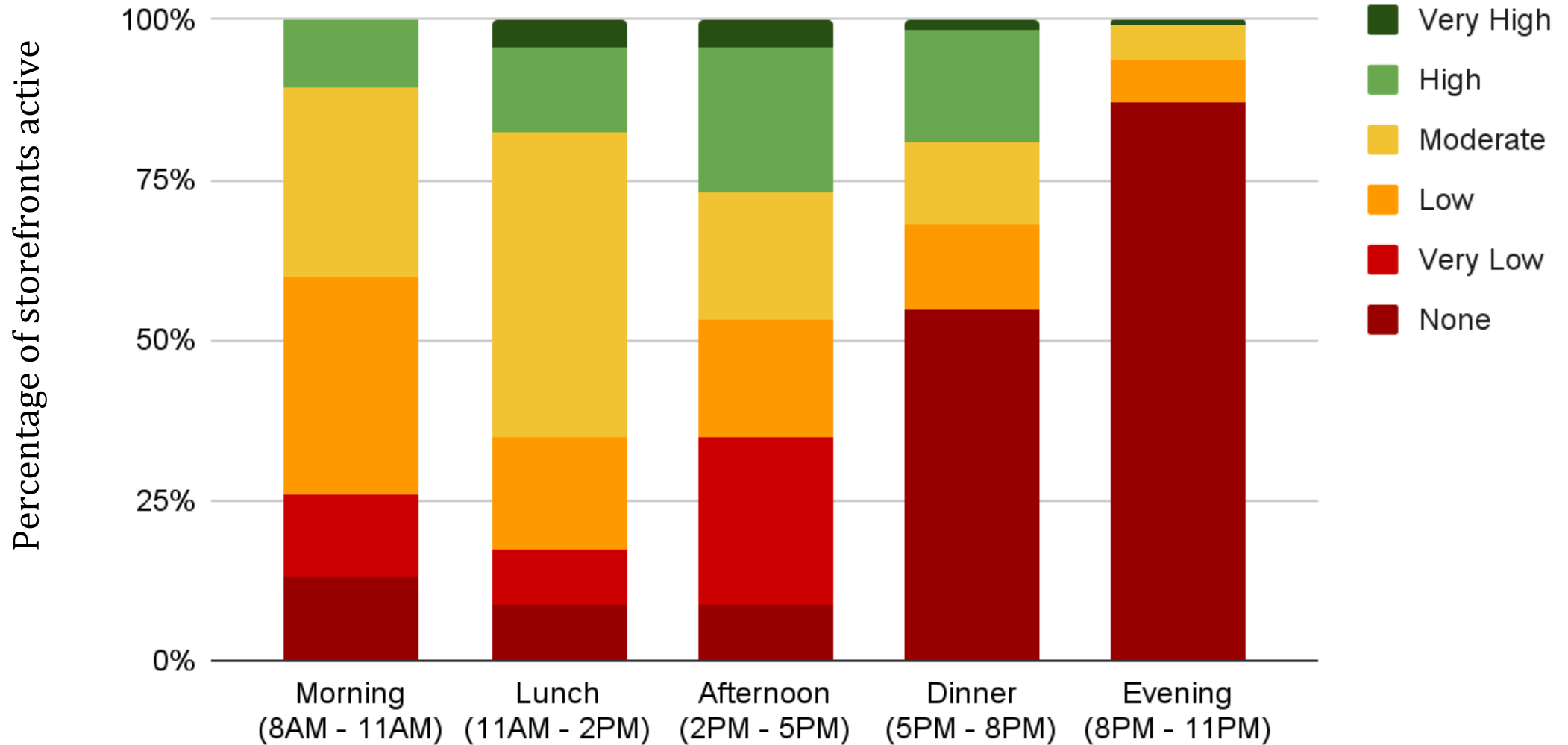
Google

Legion Parkway Land Use



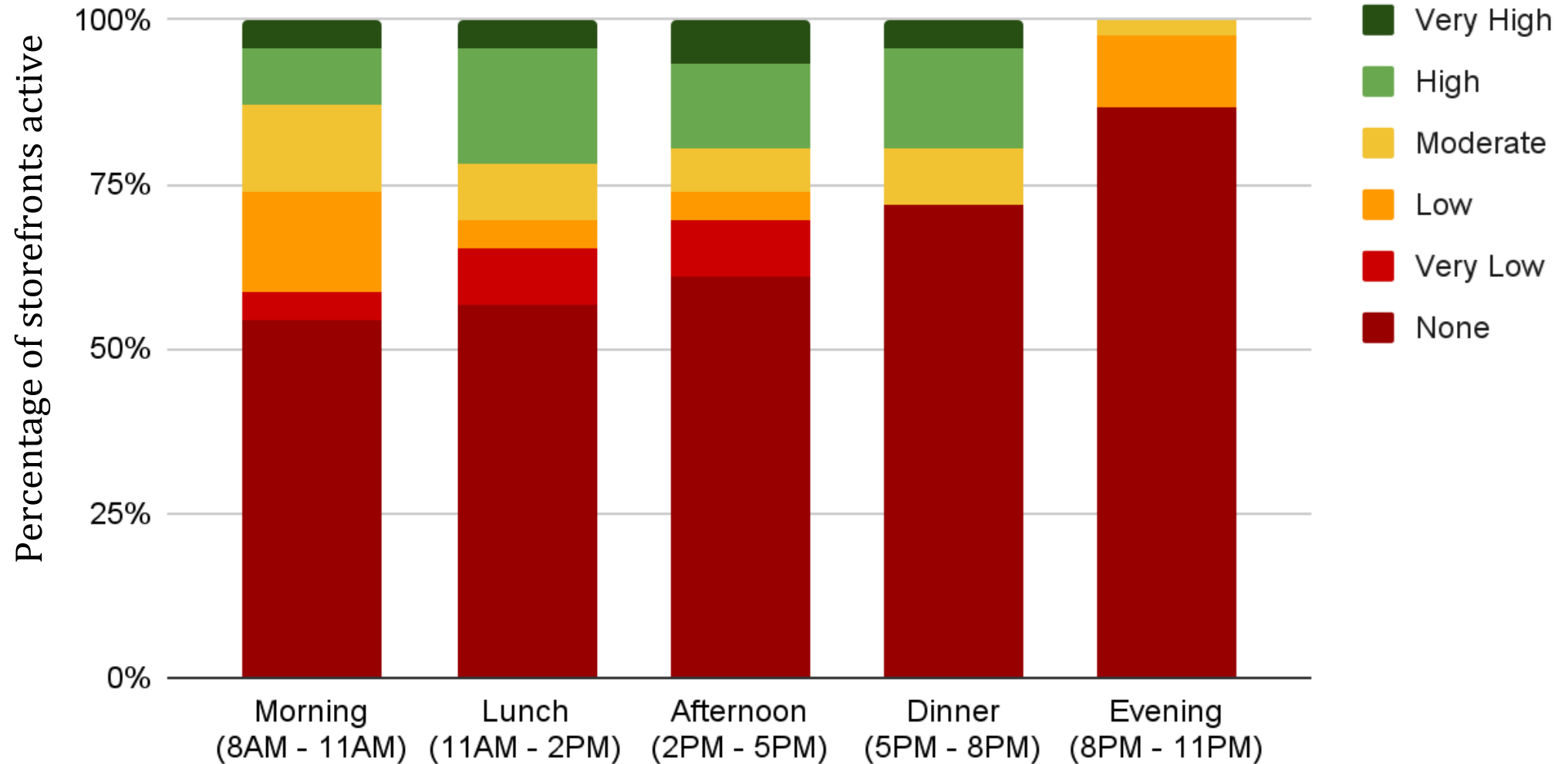
Pedestrian Activity Level (PAL) - Legion Parkway

Weekday PAL per Time Category on Legion Parkway



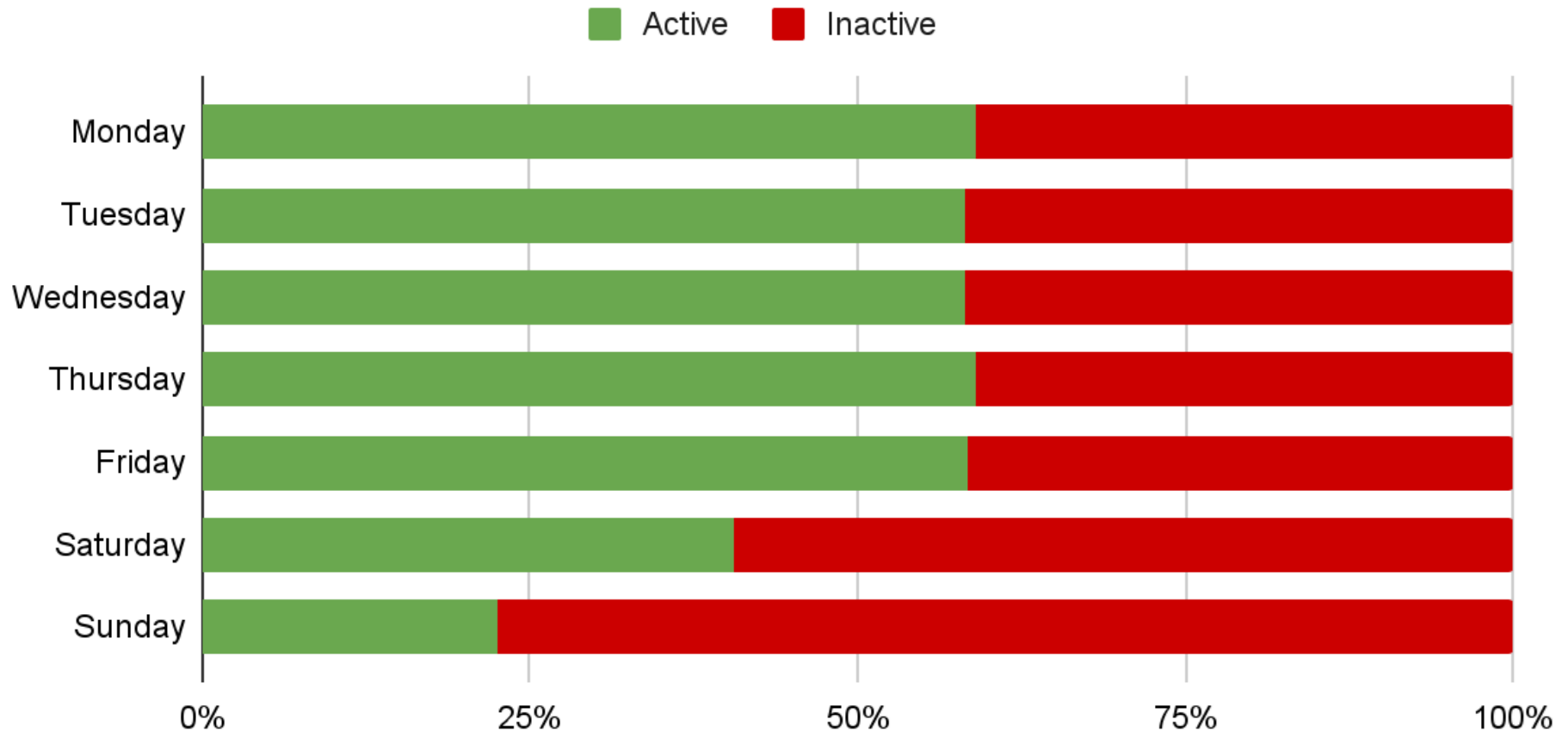
Pedestrian Activity Level (PAL) - Legion Parkway

Weekend PAL per Time Category on Legion Parkway



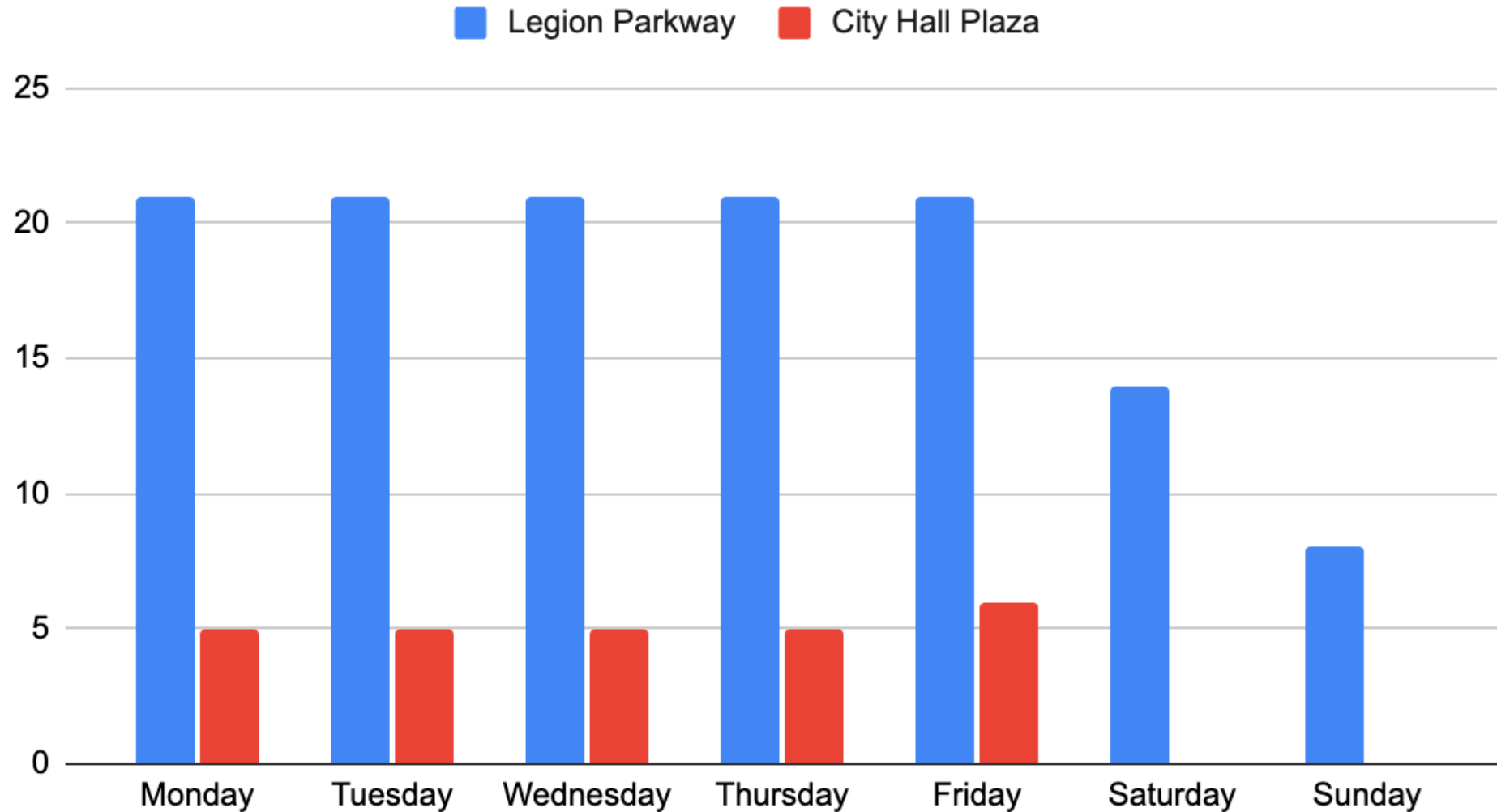
Active Time - Legion Parkway

Percentage of Time Businesses are Active on Legion Parkway
(16hr day)



Activity: Legion Parkway vs City Hall Plaza

Number of Businesses Open



Place Governance

The collaboration of actors across sectors to make decisions that help shape the economic, physical and/or social dynamics of a specific place.

- Jennifer Vey and Nate Storrington, *Hyperlocal*





- Cross-sector collaboration & shared vision
- Common goals and mutual accountability
- Placemaking/placekeeping strategies
- Long-term investments
- District management tools:
 - *Business Improvement Districts*
 - *Cultural Districts*
 - *Parking Benefit Districts*
 - *Leadership cohorts*



Policy Recommendation Highlights

- 1. Infill Development:** Support effective financing tools for small and mid-sized infill development in Gateway Cities—replace surface parking, generate more activities, entrances, and engagement with public space.
- 2. Parking:** Centralize downtown parking in structured parking facilities designed to introduce electric vehicle (EV) infrastructure to Gateway City downtowns.
- 3. Place Governance:** Dedicate a portion of state online sales tax revenue for reinvestment in downtowns to support district management, placemaking strategies, and improvements to civic space.
- 4. Public Transit:** Fully implement the MBTA's Rail Vision strategy and increase access by supporting low-income fares for commuter rail and fare-free programs for RTAs.